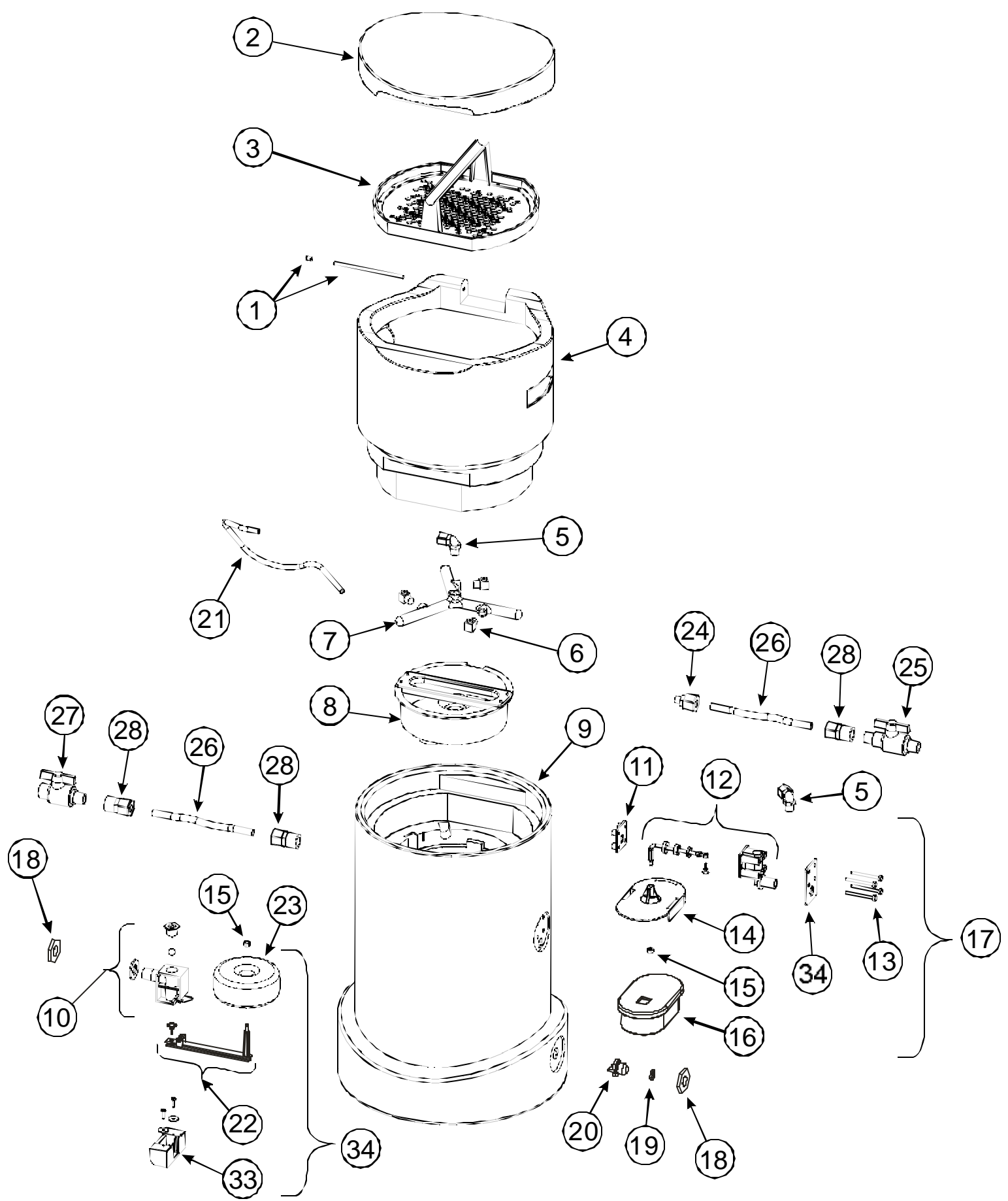


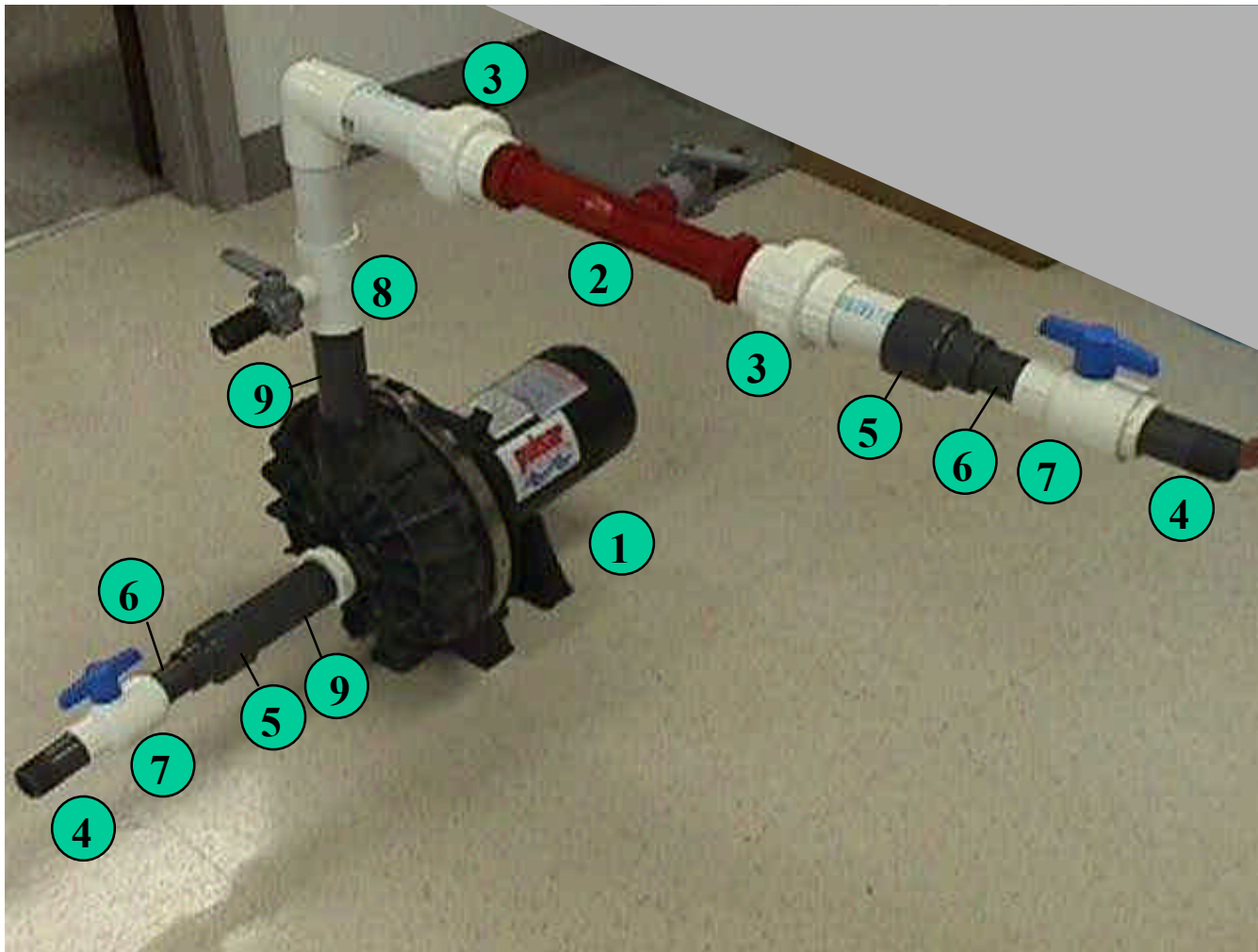
# Pulsar 3 Feeder Detailed View



### Pulsar 3

Diagram Number	Part Number	Qty	Description
0	71528	1	Pulsar 3 System, PS 5000-Includes Installation Kit
1	71608	1	Hinge Rod W/Set Screw for P3 Hopper
2	71607	1	Lid for P3
3	71609	1	Briquette Screen Assembly for P3
4	71606	1	Hopper without Lid for P3
5	71619	2	Elbow (P6ME6) 3/8" For Feeders 30991 & P3
6	71617	3	Spray Nozzle for P3
7	71616	1	Manifold for P3
8	71620	1	Deflection Plate Assembly
9	71610	1	Base without assembled parts for P3
10	71615	1	Discharge Valve Body with Plug, Ball & Gasket
11	71536	1	Emergency Shut Off Mounting Plate
12	71535	1	Emergency Shut Off Valve with Arm Only
13	71537	4	Emergency Shut Off Mounting PVC Screws(1/4-20x4)
14	71539	1	Emergency Shut Off Float Plate
15	71538	1	Emergency Shut Off Float Plate PVC Nut/Discharge Arm Nut
16	71540	1	Emergency Shut Off Overflow Float
17	71496	1	Emergency Shut Off Valve (Complete Assembly)
18	71583	2	Discharge Valve Locknut
19	71613	1	(4026) O-Ring #115 - Used in Plug
20	71612	1	Plug for Feeder Body for P3
21	71618	1	3/8" PE Tubing (2 ft)
22	71584	1	Discharge Valve Arm with Suction Cup
23	71585	1	Discharge Valve Float
24	71614	1	Tube Connector (P8MC4) for P3
25	71621	1	1/2" Ball Valve MM (Inlet)
26	71626	1	20' 1/2" O.D. PE Tubing
27	71627	1	1/2" Ball Valve MF (Outlet)
28	71588	3	(5008) 1/2" X 1/2" Female Connector (P8FC8)
29	71611	1	1/2" X close PVC Nipple
30	71373	1	Cleaning pan for Briquette Grid (Pulsar 3)
31	71598	1	(8001) Scoops (Pulsar Accessory)
32	71622	1	Operators Manual for P3 System
33	72047	1	Discharge Valve Adapter- Includes washers & screws
34	71910	1	Rubber Gasket for Emergency Shut Off Valve

# Installation Kit (71531) For Pulsar® 3 System



## Installation Kit

Diagram Number	Part Number	Qty	Description
0	71531	1	Installation Kit for Pulsar System
1	71532	1	3/4 Horsepower Pump for Pulsar System Installation
2	71811	1	Venturi - for Pulsar3 & 4 Installation Kit
3	71907	2	Unions(Quick disconnects) Venturi (Slip X Thread)
4	71543	2	1" X 3" PVC Schedule 80 Toe Nipple - Threaded on one side
5	71544	2	1 1/2" X 1" Schedule 80 PVC Reducer
6	71545	2	1" X 3" PVC Schedule 80 Nipple
7	71546	2	1" PVC SKT UTIL Ball Valve
8	71547	2	1 1/2" X 1/2" Schedule 80 PVC T SXF
9	71548	1	1 1/2" X 12" PVC Nipple
10	71370	1	Solenoid
11	71525	1	Screw (Long) M3X55, Timer or Timer/Solenoid Assembly
12	71526	1	Screw (Short) M3X32 Solenoid Assembly Only
13	71614	1	Tube Connector (P8MC4) for P3
14	71371	1	Power Cord for Solenoid/Timer - 15 Ft.
15	71658	1	Installation Manual for Pulsar 3 System
16	71890	2	Parker Fitting, W8MC8