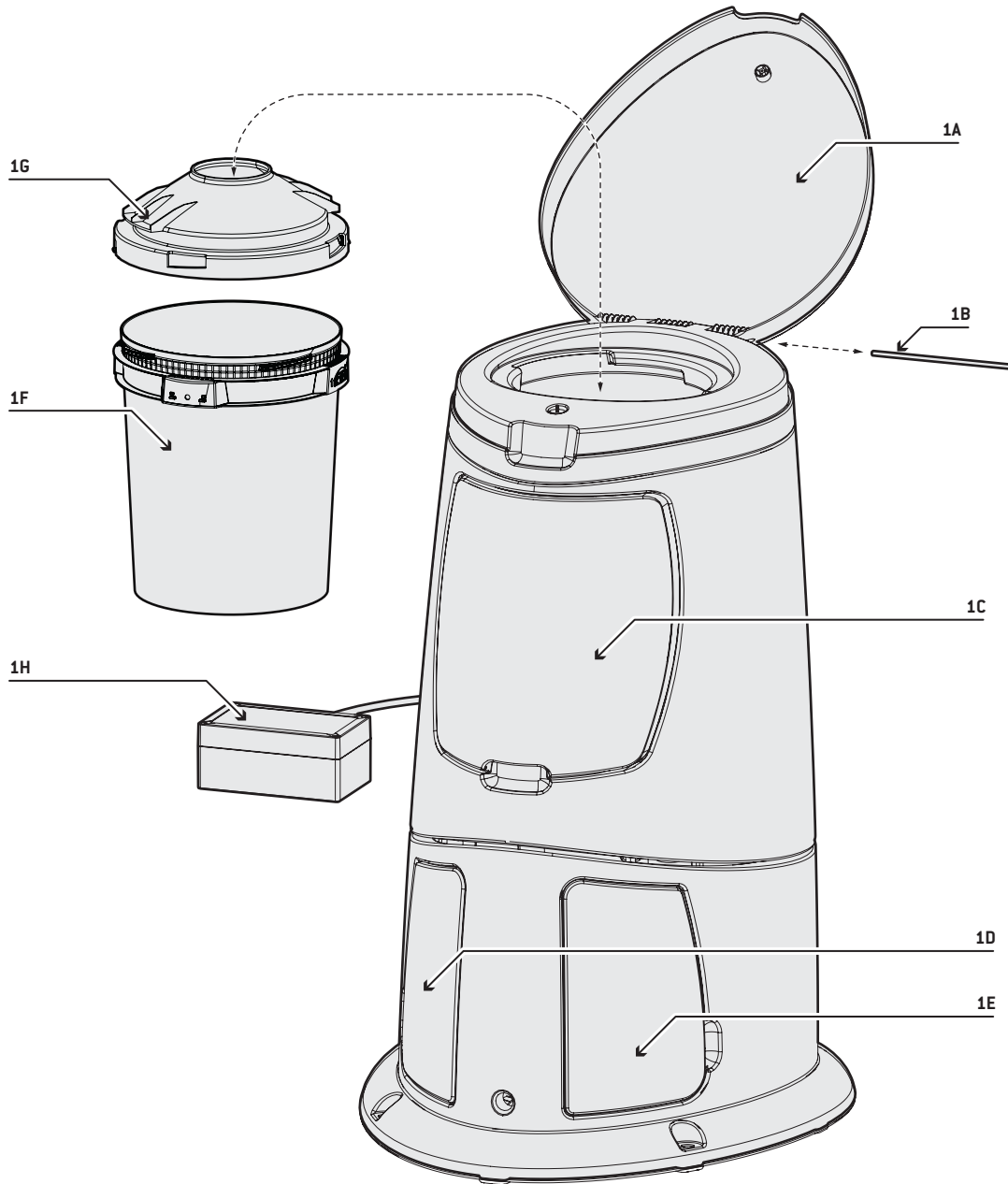
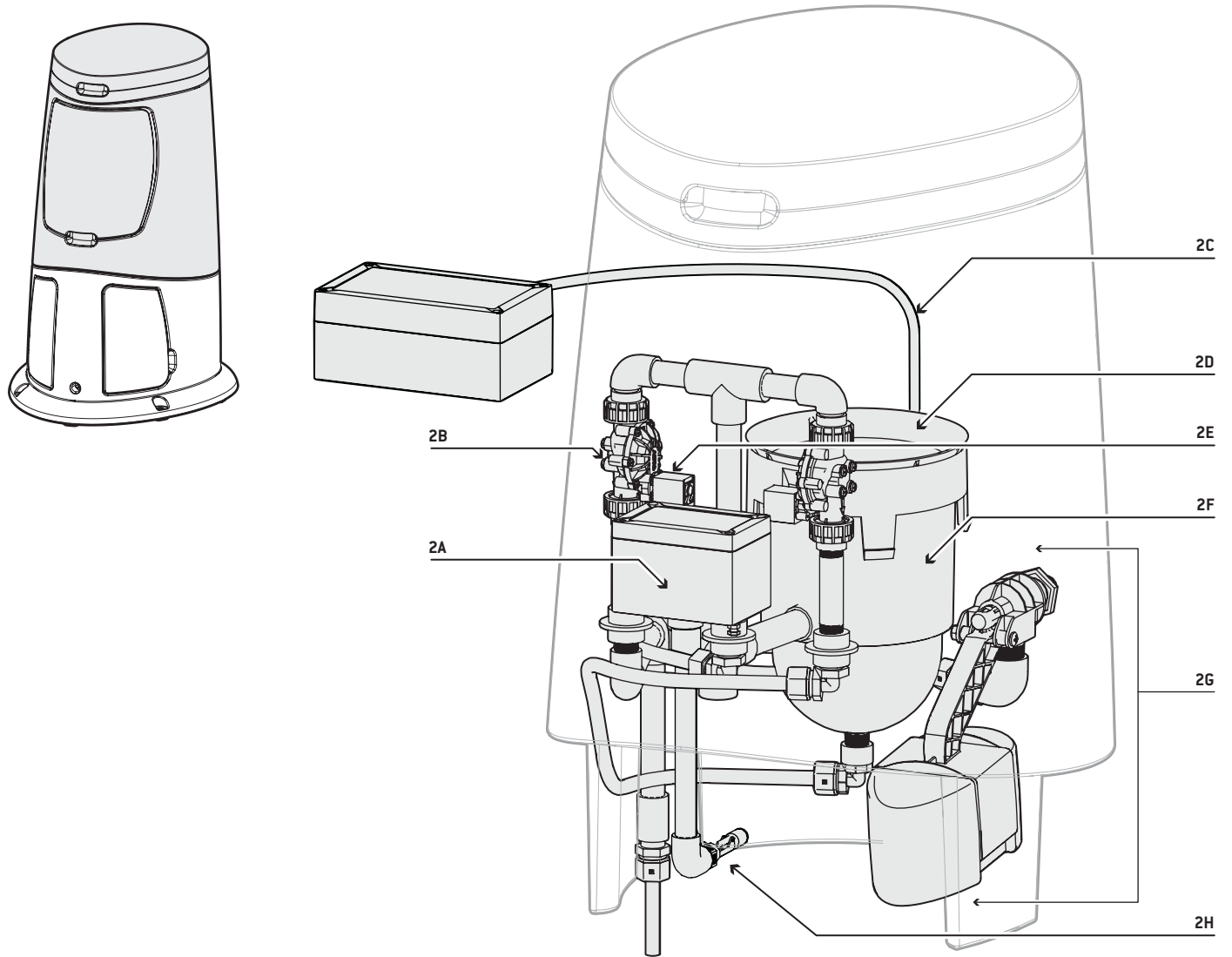


Figure 10. Hopper and Base Exterior Components View



No	Description	Part Number
1: HOPPER AND BASE EXTERIOR COMPONENTS		
1A	Pulsar Lid	73213
1B	Hinge Pin and Retainer Clip (comes with lid)	N/A
1C	Pulsar Front Cover	73223
1D	Left Cover	73225
1E	Right Cover	73226
1F	Bucket - 50 lbs Pulsar® Plus	30170
1G	Bucket Funnel	73215
1H	Control Box	73202

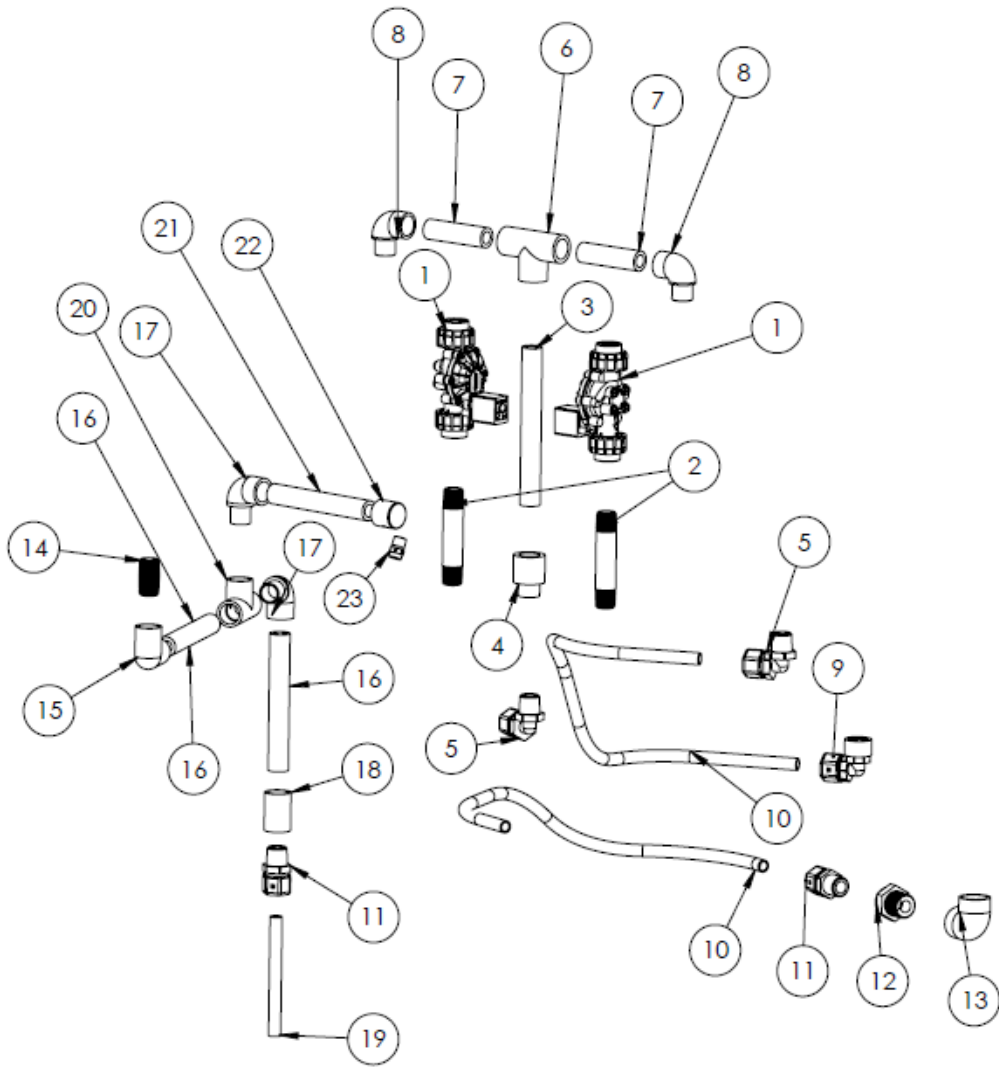
Figure 11. Hopper Interior Components View



No	Description	Part Number
2: HOPPER INTERIOR COMPONENTS		
2A	Junction Box (comes with the Control Box)	N/A
2B	Solenoid Valve	79664
2C	Wiring Harness (comes with the Control Box)	N/A
2D	Grid Basket	73220
2E	DIN Cables	73261
2F	Chlorinator, HCE Nozzle (inside bowl, not shown)	73085
2G	Emergency Shutoff Valve	73241
2H	High Level Switch	79840

THE INFORMATION CONTAINED IN THIS DRAWING IS THE SOLE PROPERTY OF IWC. ANY REPRODUCTION IN PART OR WHOLE WITHOUT THE WRITTEN PERMISSION OF IWC IS PROHIBITED.

REVISIONS				
ZONE	REV.	DESCRIPTION	DATE	APPROVED
	1	Initial Release	03/15/2019	
	2	New Corporate Logo. Update components	11/15/2019	
	3	Add components to Washdown assembly	1/16/2020	

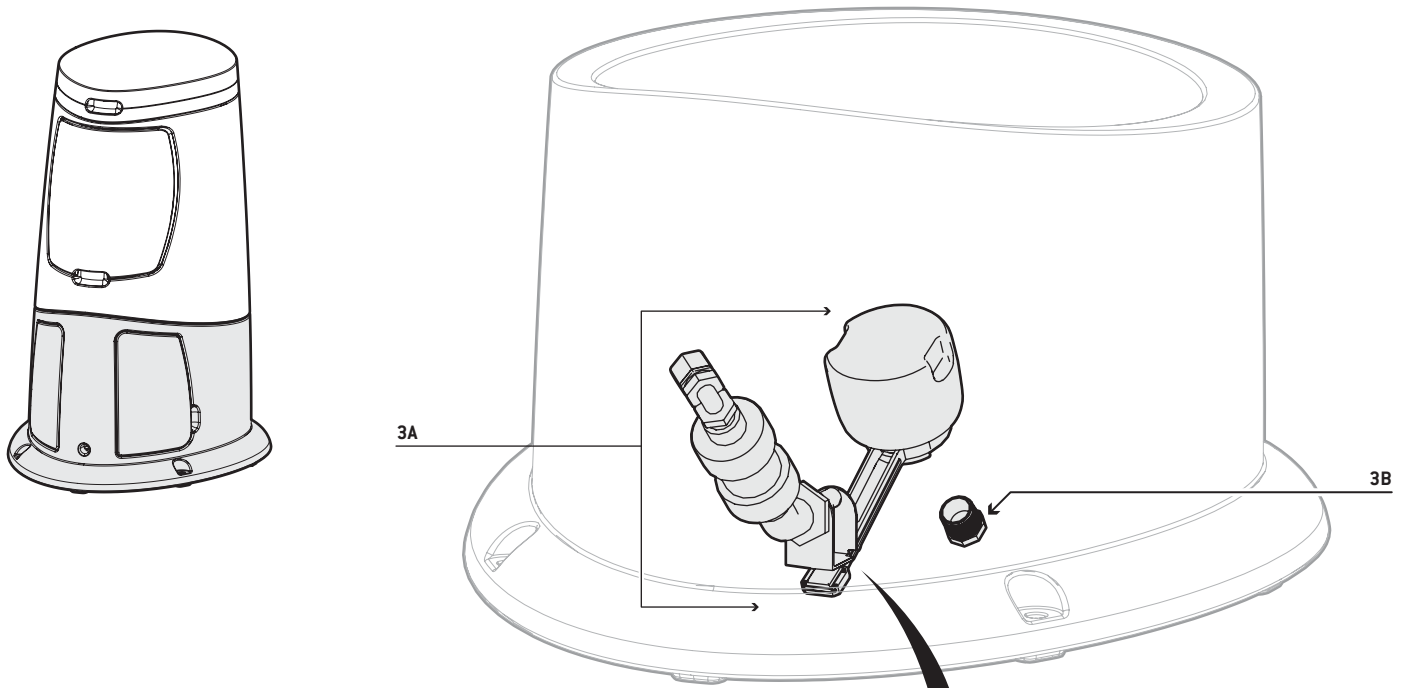


ITEM NO.	DESCRIPTION	PartNo	Vendor	QTY.
1	Solenoid	-	-	2
2	Nipple 1/2in x 4in PVC Sch80	882-040	Spears	2
3	Pipe 1/2in PVC Sch80 6.625in	-	Charlotte Pipe	1
4	Coupling 1_2in PVC Male Adapter MPTXSOC Sch80	836-005C	Spears	1
5	Elbow Male 1/2in P8ME8	P8ME8	Parker	2
6	Tee 1_2in SOC PVC Sch80	801-005	Spears	1
7	Pipe 1/2in PVC Sch80 3.0in	-	Charlotte Pipe	2
8	Elbow 1_2in PVC 90 ST ELL MPTXSOC Sch40 Black	410-005B	Spears	2
9	Elbow P8FE8	P8FE8	Parker	1
10	Tubing 1/2in OD LLDPE 1100 Series	-	Hudson Extrusions	2
11	Connector Male 1/2in P8MC8	P8MC8	Parker	2
12	Bushing Reducing 3_4in MNPT x 1_2in FNPT PVC Sch80	839-101	Spears	1
13	Elbow Threaded 3/4in PVC 90 ELL FPT Sch40	408-007	Spears	1
14	Nipple Threaded 1/2in x 1 1/2in PVC Sch80	882-015	Spears	1
15	Elbow Socket 1/2in PVC 90 ELL SOCXFPT Sch40	407-005	Spears	1
16	Pipe 1/2in PVC Sch40 5.75in	-	Charlotte Pipe	2
17	Elbow 1_2in PVC 90 ST ELL SpigotxSOC Sch40	409-005	Spears	2
18	Coupling 1_2in PVC SOCXFTPSch40	435-005	Spears	1
19	Tube 1/2in OD PVC Braided KHW-053	KHW-053	Kentak	1
20	Tee 1_2in SOC PVC Sch40	401-005	Spears	1
21	Pipe 1/2in PVC Sch40 5.375in	-	Charlotte Pipe	1
22	Cap 1_2in PVC Soc Sch40	447-005	Spears	1
23	Nozzle Lechler 460644	460-644	Lechler	1

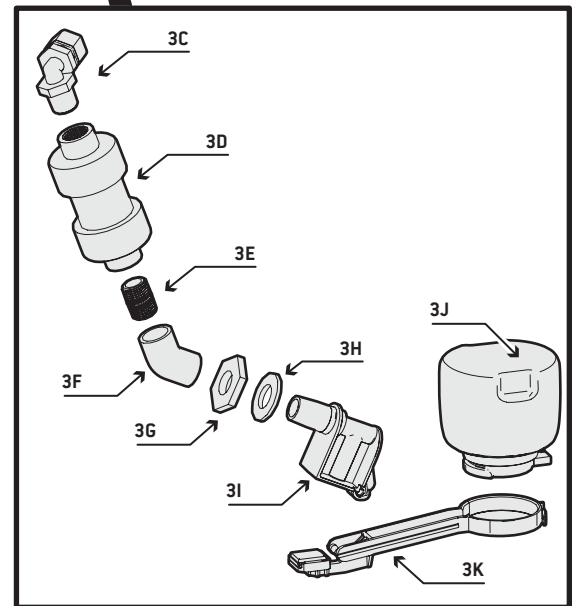
Note:
 Cap 1/2in PVC (22) bonded to Pipe 1/2in PVC (21).
 Hole drilled and tapped for Lechler Nozzle (23) as appropriate.
 Nozzle alternatives: #460-644, #460-406, #432-564

UNLESS OTHERWISE SPECIFIED DIMENSIONS ARE IN INCHES TOLERANCES ARE: FRACTIONS DECIMALS ANGLES +/- 1/32 X +/- .1 +/- .5 .XX +/- .01 .XXX +/- .005		INNOVATIVE WATER CARE	
APPROVALS		DATE	
DRAWN AO		01/18/19	
CHECKED			
RESP ENG		01/18/19	
APPROVED			
PROJECT HCE		TITLE Plumbing Hopper Assembly HCE	
DWG. NO. -		SHEET SIZE B	REV. 3
DO NOT SCALE DRAWING 1 OF 1			

Figure 12. Base Interior Components View



No	Description	Part Number
3: BASE INTERIOR COMPONENTS - RECIRCULATION PUMP ASSEMBLY		
3A	Discharge Valve Assembly	79217
3B	3/4" NPT Plug PVC (replacement customer sourced)	N/A
3C	1/2" 90° Tubing Connector, W8ME8	71898
3D	PVC Check Valve	79218
3E	1/2" Threaded Nipple	71916
3F	1/2" 45° Threaded Elbow	79222
3G	Discharge Valve Nut	71583
3H	Discharge Valve Gasket	71576
3I	Discharge Valve Body	79806
3J	Discharge Valve Float	79810
3K	Discharge Valve Arm	79805



11 Limited Warranty

The Pulsar® Precision Feeder is warranted against any manufacturing defects in material or workmanship for a period of 12 months after installation or 18 months after shipping from Innovative Water Care, whichever is earlier. This warranty applies only to the original end-user.

Service

For warranty service, contact the authorized Pulsar® Precision Dealer in your area. Any defective part(s) covered by this warranty will be repaired or replaced, at Innovative Water Care's discretion. Replacement may be with either new or reconditioned parts.

Exclusions

This warranty does not cover damage or failure due to accidents, fire, flood, or other acts of God. Nor does it cover damage or failure due to abuse, misuse, abnormal or improper use, neglect, improper maintenance, alterations or modifications by anyone other than Innovative Water Care (unless specifically approved in writing by Innovative Water Care), repairs by anyone other than an authorized Dealer, or ordinary wear and tear.

Use of any briquettes or other chemicals other than the Pulsar® Plus Briquettes designed for use with this chlorinator shall void this warranty.

Any transportation to and from an authorized Pulsar® Precision Dealer is your responsibility.

Neither Innovative Water Care nor its Dealers are responsible or liable for indirect, special, or consequential damages arising out of or in connection with the use or performance of the product or other damages with respect to loss of property, loss of revenues or profit by the owner. EXCEPT AS PROVIDED ABOVE, Innovative Water Care MAKES NO WARRANTIES. ANY IMPLIED WARRANTY OF MERCHANTABILITY OR FITNESS FOR A PARTICULAR PURPOSE IS SPECIFICALLY EXCLUDED.

Note: No modifications may be made to the chlorinator without prior written approval from Innovative Water Care. Unauthorized modifications void any warranty. This Pulsar® Precision Feeder is subject to one or more patents owned by Innovative Water Care, and all rights in any modifications or improvements, including but not limited to any patents, copyrights, trademarks or trade secrets, belong exclusively to Innovative Water Care.

For information, contact Innovative Water Care at (800) 478-5727.