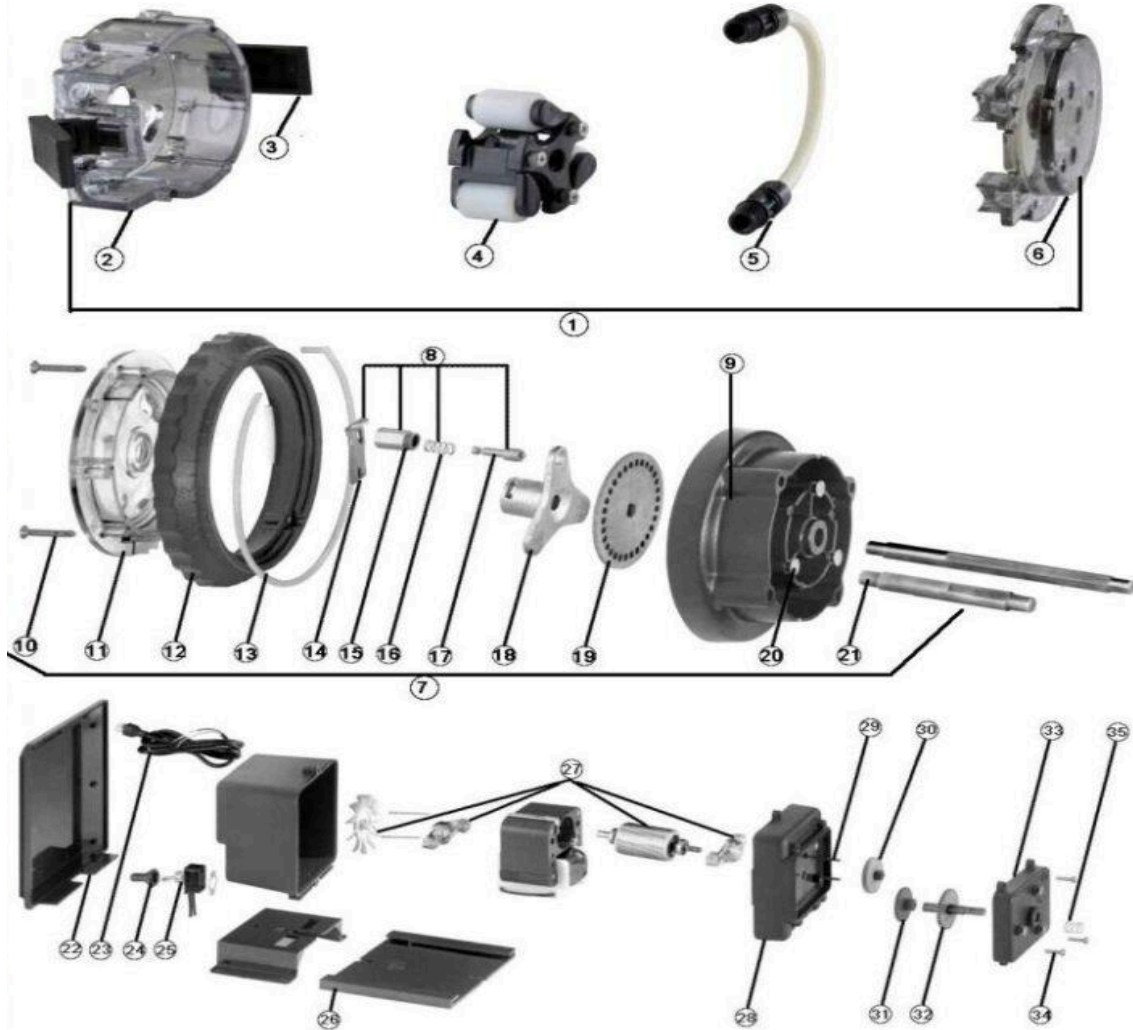


Classic/Adjustable Stenner Diagram



1	Quick Pro Head	10	Mounting Plate Screw	19	Index Plate	28	Gear Case
2	Housing w/ Latches	11	FRC Mounting Plate	20	Mounting Rivet	29	Gear Post
3	Latches	12	Dial Ring	21	Main Shaft Single Head	30	Phenolic Gear
4	Roller	13	Variable CAM	22	Rain Roof	31	Metal Gear
5	Pump Tube	14	Index Pin Lifter	23	Power Cord 120 V	32	Motor Shaft w/ Gear
6	Housing Cover	15	Index Pin Holder	24	Switch Boot	33	Gear Case Cover
7	Shaft Single Head	16	Index Pin Spring	25	Toggle Switch	34	Cover Screw 10 Pack
8	Index Pin w/ Lifter	17	Index Pin	26	Mounting Bracket	35	Pressure Spring
9	FRC Housing w/Rivets	18	Brass Spider	27	Rotor Assembly		