

## Water Consumption Body of Water Page

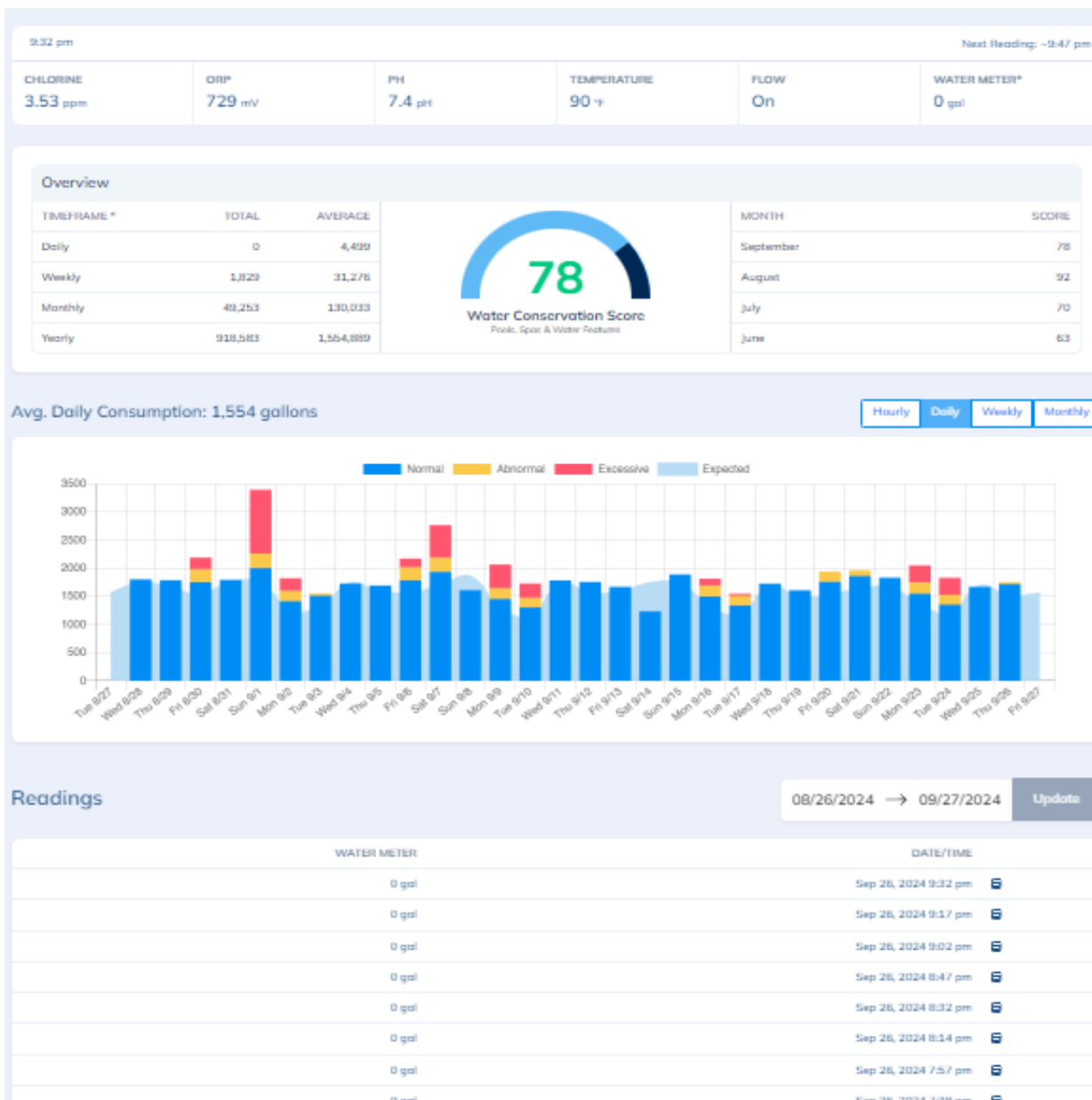
The Body of Water (BoWs) page offers a detailed view of water consumption for a specific Body of Water. This page enables properties to analyze data in depth, identifying trends, potential issues, and making forecasts for efficient water management.

Vivo Property / Activity Pool 99

WATER SAFETY **WATER CONSUMPTION** ALARMS LOGS AVERAGES CHARTS MANUAL READINGS EQUIPMENT PROFILE

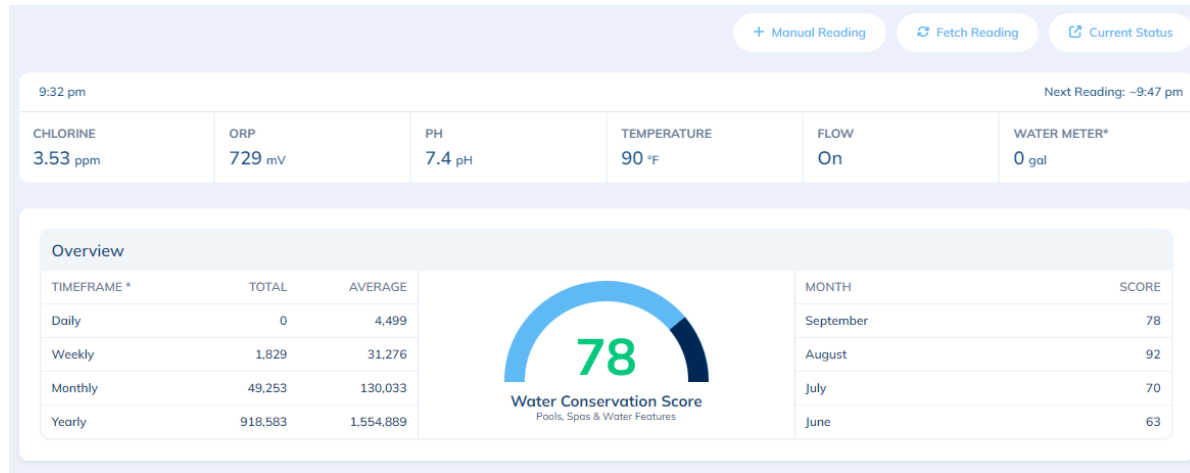
+ Manual Reading Fe

By selecting the Body of Water from the property page you'll be directed to the Body of Water details page. Click on **Water Consumption**, to be taken to the Body of Water's consumption page.



## Breakdown of information on the Body of Water Consumption page

### Overview



**Current Readings-** displays the most up-to-date readings from the controller with the ability to add manual readings, fetch a new reading, and current status into the controller. We now have the option to add a water meter reading in manual readings.

#### Water Meter

WATER METER READING

**Timeframe:** displays running totals and averages of water usage for the specific body of water. This data remains fixed and does not adjust when different date ranges are selected, providing a consistent overview of historical water consumption.

- Total Daily/Weekly/Monthly/Yearly reflects real-time water usage for the current day, week, month, and year on that specific body of water. This is a running total.
- Average Daily/Weekly/Monthly/Yearly represents the water usage over all time, calculated as the daily, weekly, monthly, or yearly average since the water meter was installed on that specific body of water.

**Water Conservation Score:** is a metric that evaluates a body of water's efficiency by comparing the size (in gallons) and type of similar bodies of water at other properties. Pools are evaluated against other pools, spas against spas, ensuring an accurate assessment of water efficiency relative to bodies of water of comparable scale and feature. The Water Conservation Score resets at the start of each month to provide up-to-date insights.

#### Scale Color Status:

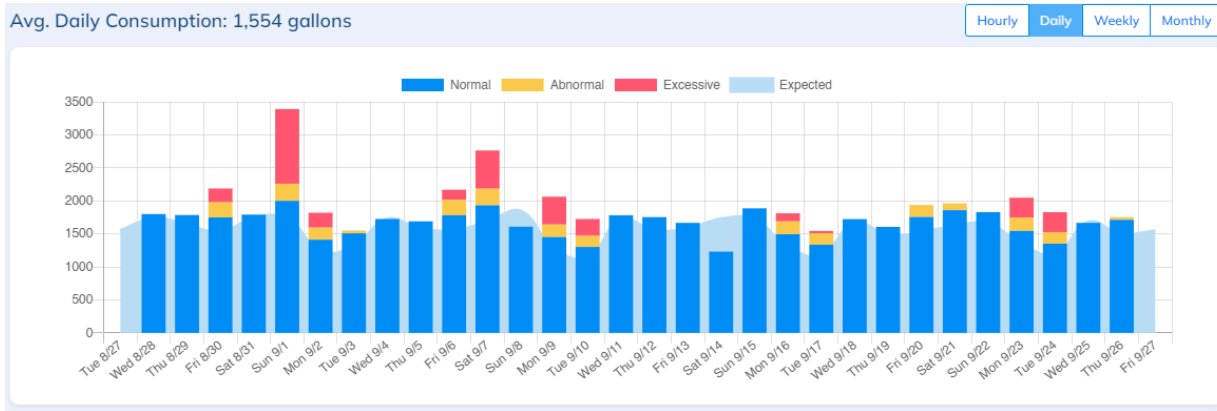
**Green**= 75-100

**Yellow**= 50-74

**Red**=0-49

**Month:** displays previous Water Conservation Scores to compare with the current score. This feature helps identify trends over time and spot any unusual patterns or deviations in water safety performance.

### Consumption Chart



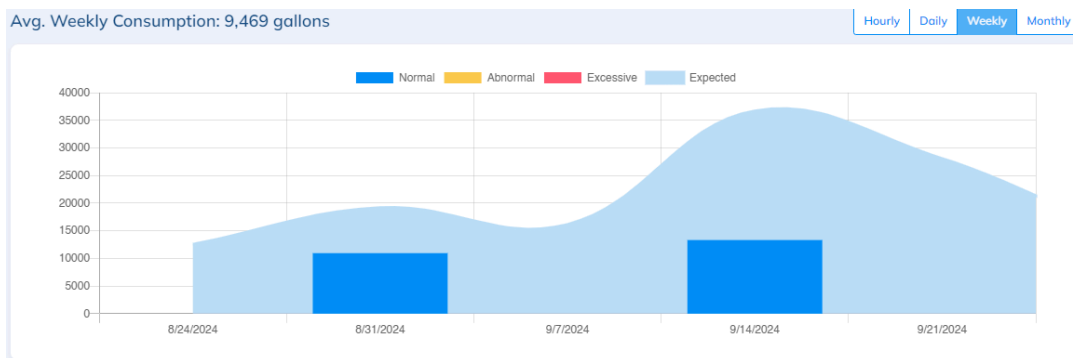
#### Color Scale

<b>Dark Blue</b>	Normal		Based on historical data collected from property
<b>Yellow</b>	Abnormal	15% over average	Based off % over expected valve
<b>Red</b>	Excessive	30% over average	Based off % over expected valve
<b>Light Blue</b>	Expected	Baseline	Based on historical data collected from property

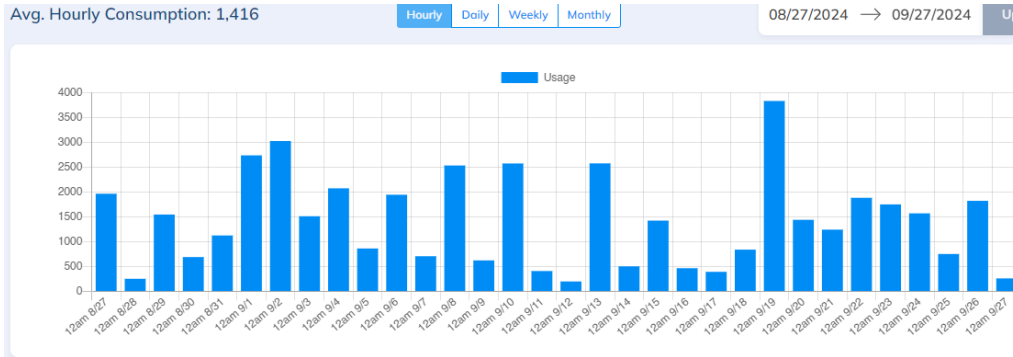
#### Data

- Data is collected from the specific body of water.
- Displays data based on selected date range, allowing full customization of the time frame to suit specific analysis needs.
- The chart updates dynamically when switching between Hourly, Daily, Weekly or Monthly views, while still reflecting data from the selected date range. The Hourly chart is real time data with no expected baseline. Baseline data for Daily/Weekly/Monthly:

	With Historical Data	Without Historical Data
Daily	The same day of the week for 14 weeks	Prior 14 days
Weekly	The same week of the year for the past 4 years	Prior 4 weeks
Monthly	The same month of the year for the past 3 years	Prior 3 months



- There is no expected historical data for hourly charts. Hourly charts only show real time data.



### Readings

Readings

08/26/2024 → 09/27/2024 Update

WATER METER	DATE/TIME
0 gal	Sep 26, 2024 9:57 pm
127 gal	Sep 26, 2024 9:24 pm
0 gal	Sep 26, 2024 8:48 pm
0 gal	Sep 26, 2024 8:14 pm
0 gal	Sep 26, 2024 7:42 pm
0 gal	Sep 26, 2024 7:12 pm
119 gal	Sep 26, 2024 6:42 pm

- Controller water meter data imported into VivoPoint every 30 minutes.
- Displays readings based on selected date range, allowing full customization of the time frame to suit specific analysis needs.