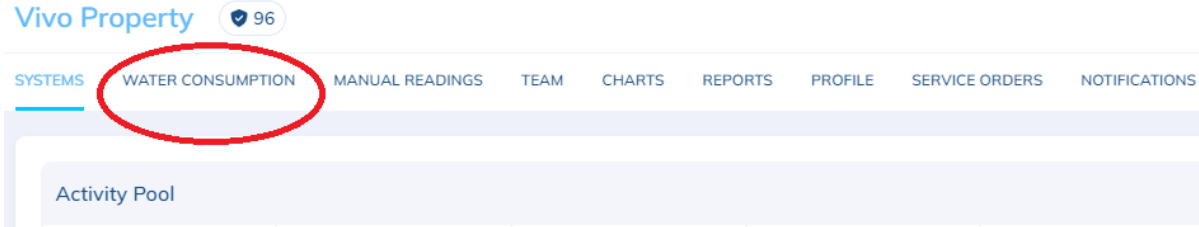
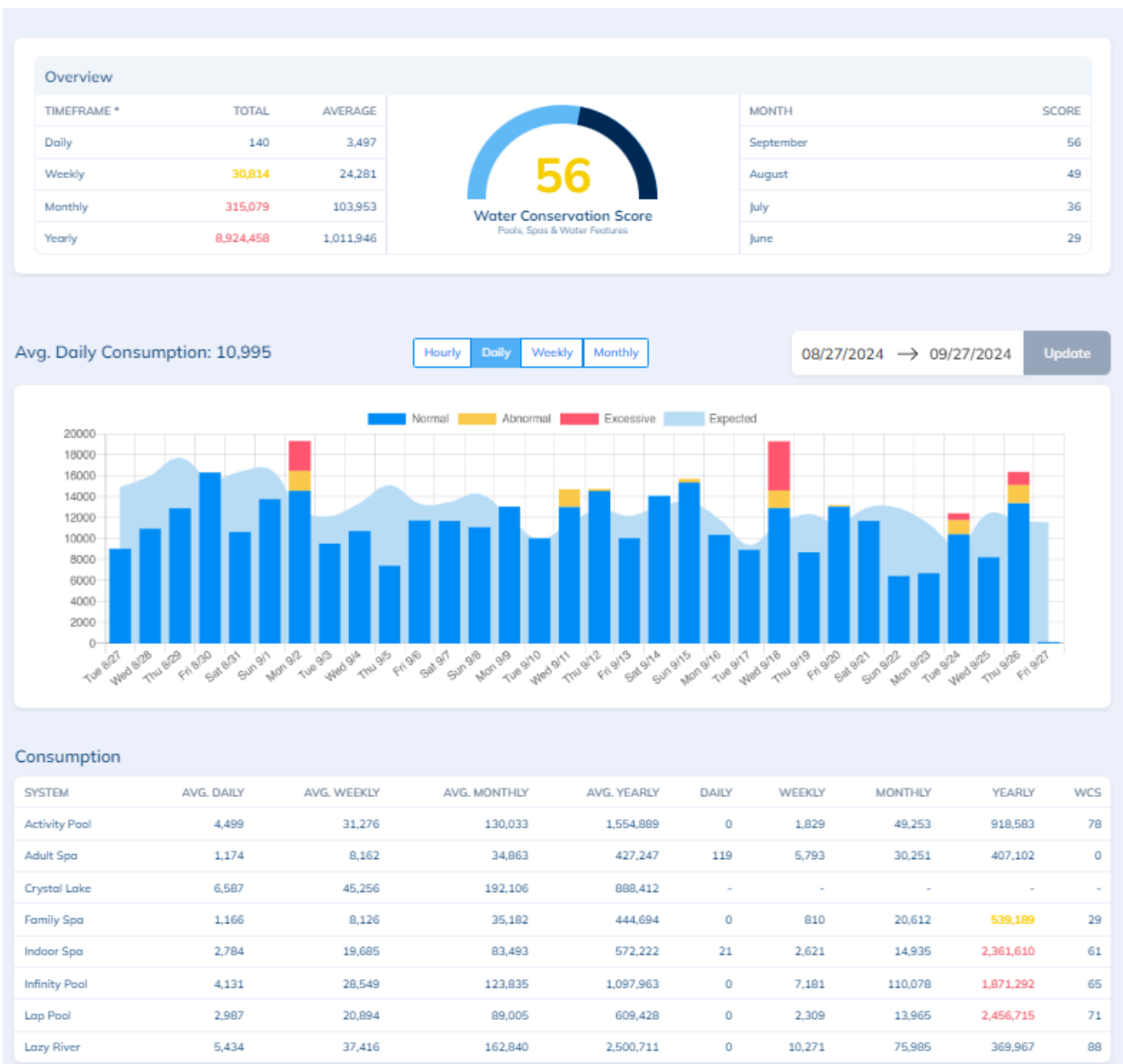


Water Consumption Property Page

The Property page provides a comprehensive overview of water consumption data, including both averages and totals for all Bodies of Water (BoWs) within the property. This information helps track water usage patterns and supports efficient water management for the facility.



When you click on **Water Consumption**, you'll be directed to the property's water consumption page.



Breakdown of information on the Property Water Consumption page

Overview

Overview				
TIMEFRAME *	TOTAL	AVERAGE	MONTH	SCORE
Daily	250	3,497	September	56
Weekly	26,739	24,281	August	49
Monthly	315,189	103,953	July	36
Yearly	8,924,568	1,011,946	June	29

56
Water Conservation Score
Pools, Spas & Water Features

Timeframe: displays running totals and averages of water usage for all Bodies of Water (BoWs) on the property. This data remains fixed and does not adjust when different date ranges are selected, providing a consistent overview of historical water consumption.

- Daily/Weekly/Monthly/Yearly reflects real-time water usage for the current day, week, month, and year of all Bodies of Water (BoWs) on property. This is a running total.
- Average Daily/Weekly/Monthly/Yearly represents the water usage over all time, calculated as the daily, weekly, monthly, or yearly average since the water meter was installed on all the Bodies of Water (BoWs) on the property.

Water Conservation Score: is a metric that evaluates a property's water efficiency by comparing the size and number of Bodies of Water (BoWs) on the property—such as pools, spas, and other water features—with similar properties. Pools are compared to other pools, spas to other spas, ensuring an accurate assessment of how efficiently each property uses water relative to properties of comparable scale and water features. Water Conservation Score starts over at the beginning of every month.

Scale Color Status:

Green = 75-100

Yellow = 50-74

Red = 0-49

Month: displays previous Water Consumption Scores to compare with the current score. This feature helps identify trends over time and spot any unusual patterns or deviations in water safety performance.

Consumption Chart



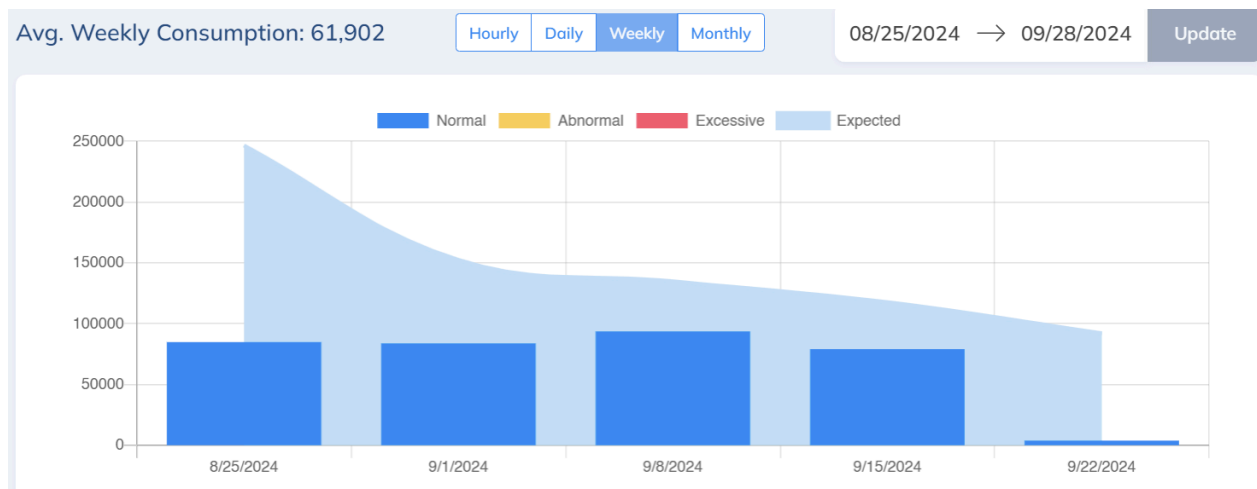
Color Scale

Dark Blue	Normal		Based on historical data collected from property
Yellow	Abnormal	15% over average	Based off % over expected value
Red	Excessive	30% over average	Based off % over expected value
Light Blue	Expected	Baseline	Based on historical data collected from property

Data

- Data is collected from all Bodies of Water (BoWs) on the property that are actively collecting data via water meters.
- Displays data based on selected date range, allowing full customization of the time frame to suit specific analysis needs.
- The chart updates dynamically when switching between Hourly, Daily, Weekly or Monthly views, while still reflecting data from the selected date range. The Hourly chart is real time data with no expected baseline. Baseline data for Daily/Weekly/Monthly/Yearly:

	With Historical Data	Without Historical Data
Daily	The same day of the week for 14 weeks	Prior 14 days
Weekly	The same week of the year for the past 4 years	Prior 4 weeks
Monthly	The same month of the year for the past 3 years	Prior 3 months
Yearly	The prior 3 years	Prior year



Consumption

Consumption									
SYSTEM	AVG. DAILY	AVG. WEEKLY	AVG. MONTHLY	AVG. YEARLY	DAILY	WEEKLY	MONTHLY	YEARLY	WCS
Activity Pool	4,499	31,276	130,033	1,554,809	0	1,829	49,253	918,583	78
Adult Spa	1,174	8,162	34,863	427,247	119	5,793	30,251	407,102	0
Crystal Lake	6,587	45,256	192,106	800,412	-	-	-	-	-
Family Spa	1,166	8,126	35,182	444,694	0	810	20,612	538,189	29
Indoor Spa	2,784	19,685	83,493	572,222	21	2,621	14,935	2,361,610	61
Infinity Pool	4,131	28,549	123,835	1,097,963	0	7,181	110,078	1,871,292	65
Lap Pool	2,987	20,894	89,005	609,428	0	2,309	13,965	2,456,715	71
Lazy River	5,434	37,416	162,840	2,500,711	0	10,271	75,985	369,967	88

- Breakdown of all Bodies of Water on the property (BoWs) that are actively reporting data from a water meter.
- Shows Water Conservation Score per Body of Water (BoWs).
- Displays data based on selected date range, allowing full customization of the time frame to suit specific analysis needs.
- Each Body of Water (BoW) with an active water meter provides both current and average water meter readings.
 - The **current reading** reflects real-time water usage for the current day, week, month, and year.

DAILY	WEEKLY	MONTHLY	YEARLY
0	1,829	49,253	918,583
119	5,793	30,251	407,102
-	-	-	-
0	810	20,612	538,189
21	2,621	14,935	2,361,610
0	7,181	110,078	1,871,292
0	2,309	13,965	2,456,715
0	10,271	75,985	369,967

- The **average reading** represents the water usage over all time since the water meter was installed, calculated as the daily, weekly, monthly, or yearly average since the water meter was installed on that specific body of water.

AVG. DAILY	AVG. WEEKLY	AVG. MONTHLY	AVG. YEARLY
4,499	31,276	130,033	1,554,809
1,174	8,162	34,863	427,247
6,587	45,256	192,106	800,412
1,166	8,126	35,182	444,694
2,784	19,685	83,493	572,222
4,131	28,549	123,835	1,097,963
2,987	20,894	89,005	609,428
5,434	37,416	162,840	2,500,711